

Faculty of Engineering, The Built Environment and  
Technology  
School of Engineering

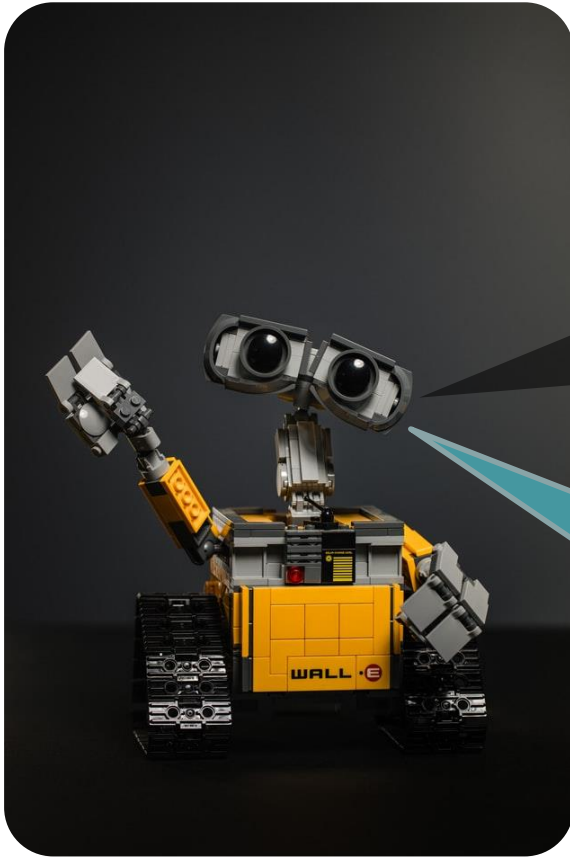
NELSON MANDELA  
UNIVERSITY

Your presenter today

Mr Alan Roberts

Director  
School of Engineering





Do you  
know what  
you want to  
do after  
school next  
year?

Ever thought  
about a career in  
**ENGINEERING?**

Engineers

We educate  
these two

Technologists

Who make up the  
**ENGINEERING**  
team?

Technicians

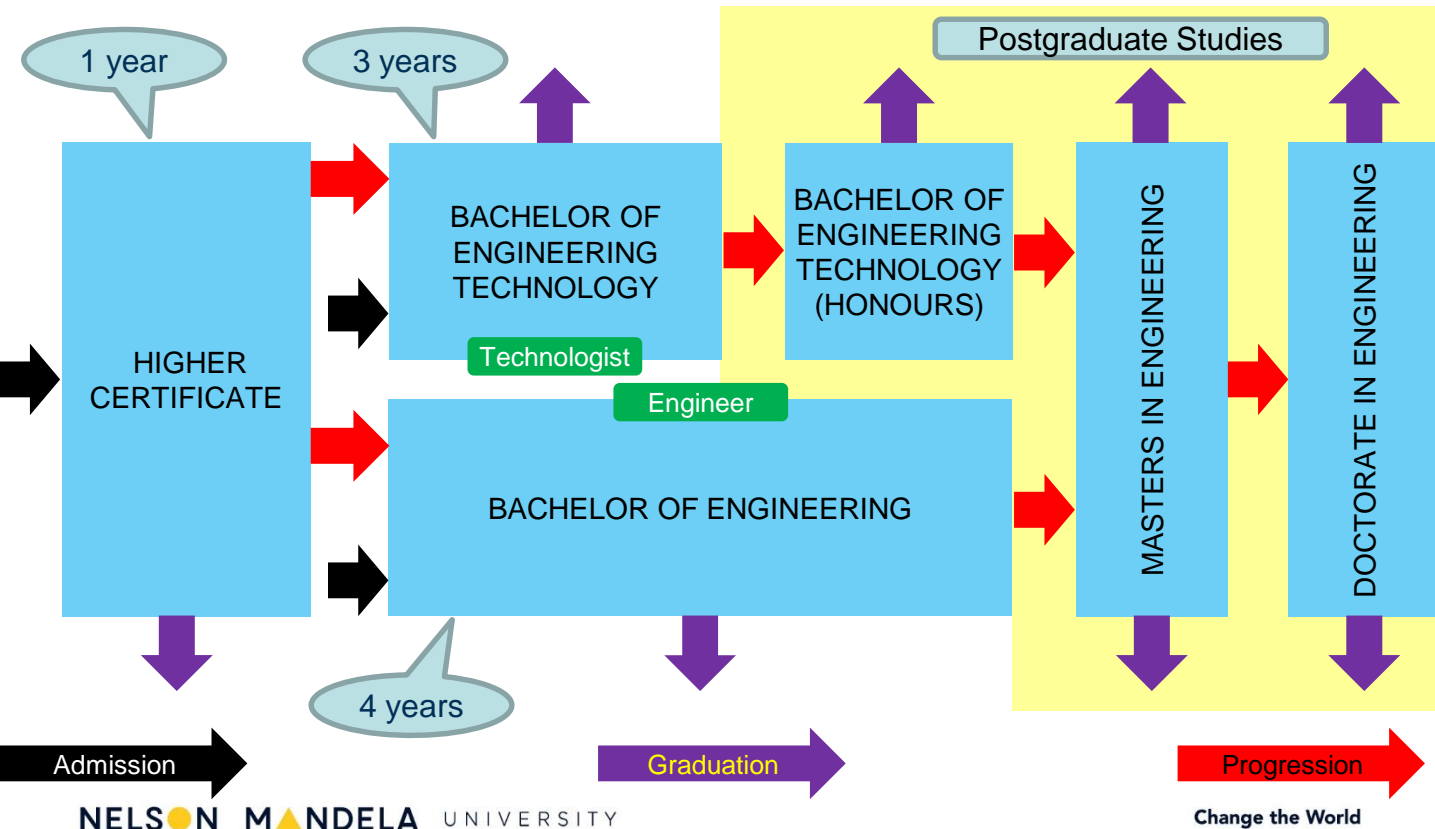
Artisans



# School of Engineering

- DEPARTMENT OF ELECTRICAL ENGINEERING
- DEPARTMENT OF INDUSTRIAL ENGINEERING
- DEPARTMENT OF MARINE ENGINEERING
- DEPARTMENT OF MECHANICAL ENGINEERING
- DEPARTMENT OF MECHATRONICS

# Suite of Qualifications



# Admission Requirements

## Higher Certificate

MATHS  
PURE OR  
TECHNICAL  
**50%**

PHYSICAL  
OR TECHNICAL  
SCIENCE  
**50%**

**AS**  
APPLICANT SCORE  
**330**

## Bachelor of Engineering Technology

MATHS  
PURE OR  
TECHNICAL  
**60%**

PHYSICAL  
OR TECHNICAL  
SCIENCE  
**50%**

**AS**  
APPLICANT SCORE  
**370**

## Bachelor of Engineering

PURE  
MATHS  
**60%**

PHYSICAL  
SCIENCE  
**65%**

**AS**  
APPLICANT SCORE  
**410**

Which one  
to take?



**NELSON MANDELA**  
UNIVERSITY

## Undergraduate Qualifications

Higher Certificate in Mechatronic Engineering

Higher Certificate in Renewable Energy Engineering (2021)

Bachelor of Technology Engineering in Electrical Engineering

Bachelor of Technology Engineering in Industrial Engineering

Bachelor of Technology Engineering in Marine Engineering

Bachelor of Technology Engineering in Mechanical Engineering

Bachelor of Engineering in Mechatronics

Diploma in Operations Management

Advanced Diploma in Operations Management

Advanced Diploma in Quality Management

Part-time



# Higher Certificate in

## MECHATRONIC ENGINEERING

This NQF5 qualification prepares you for a career in the automated manufacturing sector.



## RENEWABLE ENERGY ENGINEERING

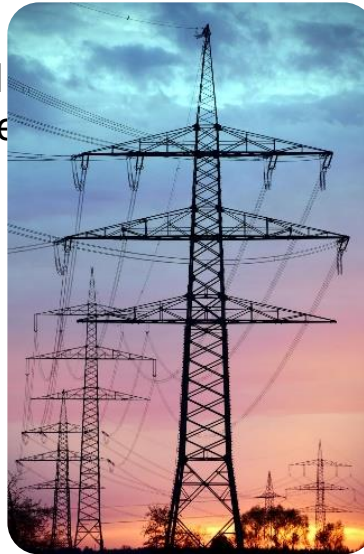
This NQF5 qualification prepares you for a career in the renewable energy sector.



# Bachelor of Engineering Technology in

## ELECTRICAL ENGINEERING

- Electrical Engineering is the study of the behavior of electrical, electronic, digital and electromechanical systems. The electrical engineering team create wealth and improve people's quality of life by developing, manufacturing and maintaining systems that generate, transmit, distribute and ensure effective and sustainable use of electricity.



# Bachelor of Engineering Technology in

## INDUSTRIAL ENGINEERING

- Industrial Engineering technologists develop concepts, designs and systems for manufacturing processes and services. They work with many different specialists like material scientists, engineers, manufacturing and services team leaders, marketers and accountants to develop new efficient processes, quality assurance protocols and systems.



# Bachelor of Engineering Technology in

## MARINE ENGINEERING

- Marine engineering is the field of study that deals with the design, development, production, operation and maintenance of the equipment used at sea and on-board sea vessels like boats, ships, oil rigs and other above or underwater structures.





# Bachelor of Engineering Technology in

## MECHANICAL ENGINEERING

- Mechanical Engineering involves the design, development and manufacturing of mechanisms, structures and machinery such as general items, tools, equipment, building trusses, vehicles and machines.



# Bachelor of Engineering in MECHATRONICS

- Mechatronics Engineering is a combination of precision mechanical engineering, electronics and computer systems. A typical Mechatronics system is characterised by close integration of the mechanical components, electrical sensors, mechanical and electrical actuators and computer controllers into products and systems useful to man and society.



# Stamp of Approval

All of these Engineering qualifications have been:

- Endorsed and accredited by the Engineering Council of South Africa – the BEng Tech in Marine Engineering is also accredited by the South African Maritime Safety Authority;
- Accredited by the Council of Higher Education;
- Registered with the South African Qualification Authority.





**WELA - merSETA  
Women in Engineering  
Leadership  
Association**

**WE ARE MOST CERTAINLY LOOKING  
FORWARD TO MEETING **YOU**  
AFTER YOU HAVE APPLIED  
TO STUDY AT  
THE NELSON MANDELA UNIVERSITY  
TO CHANGE THE WORLD!**



# Contact us

## Admissions:

[mandela.ac.za/study-at-mandela/application](http://mandela.ac.za/study-at-mandela/application)

## Financial Aid:

[finaid.mandela.ac.za](http://finaid.mandela.ac.za)

## Residence:

[studenthousing.mandela.ac.za](http://studenthousing.mandela.ac.za)



[Alan.Roberts@mandela.ac.za](mailto:Alan.Roberts@mandela.ac.za)  
[Lizl.Blom@mandela.ac.za](mailto:Lizl.Blom@mandela.ac.za)



<https://soe.mandela.ac.za/>



[facebook.com/soe.mandela.ac.za/](https://facebook.com/soe.mandela.ac.za/)



@Mandela Uni – School of Engineering

# **Change the World**

[mandela.ac.za](http://mandela.ac.za)